

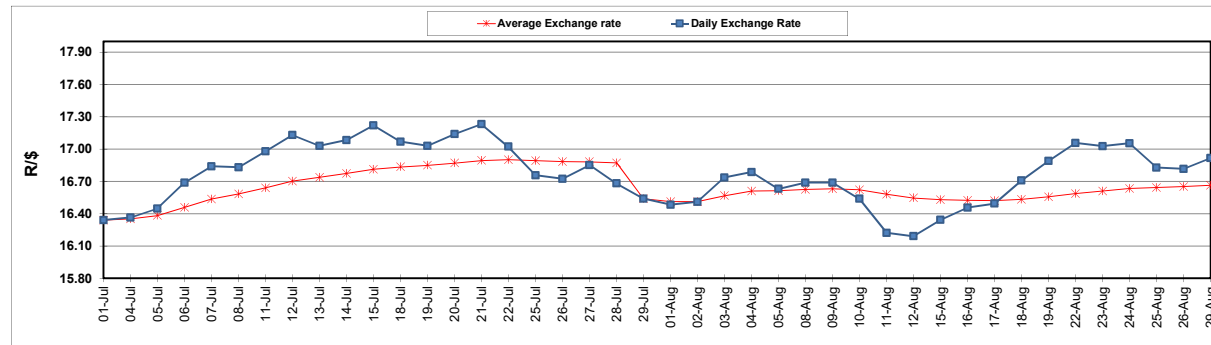
	PETROL 95 ULP	PETROL 93 ULP & LRP	DIESEL 0.05%	DIESEL 0.005%	ILL. PAR.
GAUTENG PUMP PRICE (SA c/l) AS FROM 03/08/2022	2,542.000	2,499.000	-	-	-
WHOLESALE PRICE (SA c/l) AS FROM 03/08/2022	-	-	2,452.440	2,461.840	1,842.288
SINGLE NATIONAL MAXIMUM RETAIL PRICE	-	-	-	-	2,431.000
BASIC FUEL PRICE - 29/08/2022 (SA c/l)	1,271.457	1,251.294	1,736.988	1,760.001	1,740.179
PRESS RELEASE CONTRIBUTION TO BFP 03/008/2022 - 29/08/2022 (SA c/l)	1,482.410	1,439.410	1,600.630	1,610.030	1,624.128
UNIT OVER/(UNDER) RECOVERY - 29/08/2022 (SA c/l)	210.953	188.116	(136.358)	(149.971)	(116.051)
AVERAGE BASIC FUEL PRICE 29/07/2022 - 29/08/2022	1,283.086	1,256.218	1,520.304	1,539.991	1,550.465
AVERAGE UNIT OVER/(UNDER) RECOVERY 29/07/2022 - 29/08/2022	227.552	211.419	102.553	92.675	93.300

ANALYSIS MOVEMENT OF AVERAGE OVER/(UNDER) RECOVERY

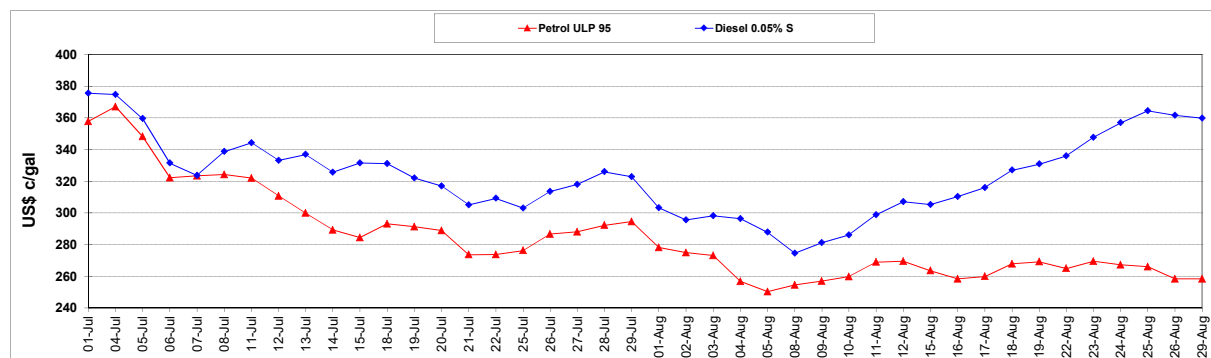
	PETROL 95	PETROL 93	DIESEL 0.05%	DIESEL 0.005%	ILL. PAR.
- MOVEMENT IN INTERNATIONAL PRODUCT PRICES	211.465	195.670	83.493	73.369	73.861
- MOVEMENT IN EXCHANGE RATE	16.086	15.749	19.060	19.306	19.438
AVERAGE UNIT OVER/(UNDER) RECOVERY 29/07/2022 - 29/08/2022	227.552	211.419	102.553	92.675	93.300

R/\$ EXCHANGE RATE - (R/\$16.9150 - 29/08/2022)

EXCHANGE RATE USED IN BASIC FUEL PRICE



INTERNATIONAL PRODUCT PRICES OF BASKET USED IN BASIC FUEL PRICE



BASIC FUEL PRICE IN SA CENTS PER LITRE

